



## BMW iX

Standard Safety Equipment

2021



### Adult Occupant



91%

### Child Occupant



87%

### Vulnerable Road Users



73%

### Safety Assist



81%

## SPECIFICATION

Tested Model	BMW iX xDrive40 4x4, LHD
Body Type	- 5 door SUV
Year Of Publication	2021
Kerb Weight	2573kg
VIN From Which Rating Applies	- all iX
Class	Large Off-Road

SAFETY EQUIPMENT

	Driver	Passenger	Rear
FRONTAL CRASH PROTECTION			
Frontal airbag	●	●	—
Belt pretensioner	●	●	●
Belt loadlimiter	●	●	●
Knee airbag	✗	✗	—
LATERAL CRASH PROTECTION			
Side head airbag	●	●	●
Side chest airbag	●	●	●
Side pelvis airbag	✗	✗	✗
Centre Airbag	●	●	—

Version 011221

## SAFETY EQUIPMENT (NEXT)

	Driver	Passenger	Rear
CHILD PROTECTION			
Isofix	—	✗	—
Integrated CRS	—	✗	✗
Airbag cut-off switch	—	●	—
SAFETY ASSIST			
Seat Belt Reminder	●	●	●

OTHER SYSTEMS	
Active Bonnet	●
AEB Vulnerable Road Users	●
AEB Pedestrian - Reverse	✗
AEB Car-to-Car	●
Speed Assistance	●
Lane Assist System	●

**Note: Other equipment may be available on the vehicle but was not considered in the test year.**

- Fitted to the vehicle as standard    ○ Fitted to the vehicle as part of the safety pack  
 ○ Not fitted to the test vehicle but available as option or as part of the safety pack    ✗ Not available    — Not applicable



ADULT OCCUPANT

Total 34.7 Pts / 91%



GOOD



ADEQUATE



MARGINAL



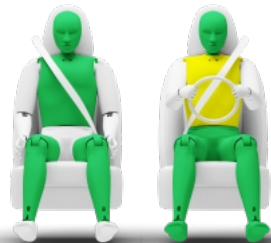
WEAK



POOR

Frontal Impact

13.7 / 16 Pts



Mobile Progressive Deformable Barrier



Full Width Rigid Barrier

Lateral Impact

16.0 / 16 Pts



Side Mobile Barrier



Side Pole



Far-Side Excursion



Occupant Interaction

Rear Impact

4.0 / 4 Pts



Rear Seat



Front Seat



## ADULT OCCUPANT

Total 34.7 Pts / 91%

 GOOD ADEQUATE MARGINAL WEAK POOR

## Rescue and Extrication

1.0 / 2 Pts

Rescue Sheet

Available, ISO compliant



Advanced eCall

Available

Multi Collision Brake

Available

## Comments

The passenger compartment of the iX remained stable in the frontal offset test. Dummy numbers showed good protection of the knees and femurs of both the driver and passenger. BMW showed that a similar level of protection would be provided to occupants of different sizes and to those sitting in different positions. Analysis of the deceleration of the impact trolley during the test, and analysis of the deformable barrier after the test, revealed that the iX would be an aggressive impact partner in a frontal collision. In the full-width rigid barrier test, good protection was provided to all critical body areas of the driver and rear passenger, except for the chest of the passenger, protection of which was adequate. In both the side barrier test and the more severe side pole impact, protection of all critical body areas was good and the car scored maximum points in this part of the assessment. The iX has a centre airbag to mitigate occupant to occupant injuries in the event of a lateral collision. In Euro NCAP's test, the airbag worked well, with good protection of the dummies' heads. Limitation of the extent to which a body is thrown to the other side of the car in a side impact was also good. Tests on the front seats and head restraints demonstrated good protection against whiplash injuries in the event of a rear-end collision. A geometric analysis of the rear seats also indicated good whiplash protection. The iX is equipped with an advanced e-Call system which notifies the emergency services in the event of an accident. A multi-collision braking system is also standard, to prevent secondary collisions. However, the system did not meet Euro NCAP's requirements and was not rewarded.

## CHILD OCCUPANT

Total 43 Pts / 87%

■ GOOD
 ■ ADEQUATE
 ■ MARGINAL
 ■ WEAK
 ■ POOR

Crash Test Performance based on 6 &amp; 10 year old children

24.0 / 24 Pts

### Frontal Impact

16 Pts



### Lateral Impact

8 Pts

Restraint for 6 year old child: *Britax Römer Kidfix SL*Restraint for 10 year old child: *Osann*

## Safety Features

7.0 / 13 Pts

	Front Passenger	2nd row outboard	2nd row center
Isofix	✗	●	✗
i-Size	✗	●	✗
Integrated CRS	✗	✗	✗

● Fitted to test car as standard
 ○ Not on test car but available as option
 ✗ Not available

## CRS Installation Check

12.0 / 12 Pts

● Install without problem    ● Install with care    ● Safety critical problem    ✗ Installation not allowed

## ■ i-Size CRS

Maxi Cosi 2way Pearl &amp; 2wayFix (i-Size)



Maxi Cosi 2way Pearl &amp; 2wayFix (i-Size)



BeSafe iZi Kid X2 i-Size (i-Size)



Britax Römer TriFix2 i-Size (i-Size)



BeSafe iZi Flex FIX i-Size (i-Size)



## ■ ISOFIX CRS

BeSafe iZi Combi X4 ISOfix (ISOFIX)



Cybex Solution Z i-Fix (ISOFIX)





CHILD OCCUPANT

Total 43 Pts / 87%

■ Universal Belted CRS

Maxi Cosi Cabriofix (Belt)



Maxi Cosi Cabriofix & EasyFix (Belt)



Britax Römer King II LS (Belt)



Cybex Solution Z i-Fix (Belt)







## CHILD OCCUPANT

Total 43 Pts / 87%

	Seat Position			
	Front	2nd row		
	PASSENGER	LEFT	CENTER	RIGHT
Maxi Cosi 2way Pearl & 2wayFix (i-Size)	—	●	—	●
Maxi Cosi 2way Pearl & 2wayFix (i-Size)	—	●	—	●
BeSafe iZi Kid X2 i-Size (i-Size)	—	●	—	●
Britax Römer TriFix2 i-Size (i-Size)	—	●	—	●
BeSafe iZi Flex FIX i-Size (i-Size)	—	●	—	●
BeSafe iZi Combi X4 ISOfix (ISOFIX)	—	●	—	●
Cybex Solution Z i-Fix (ISOFIX)	—	●	—	●
Maxi Cosi Cabriofix (Belt)	●	●	●	●
Maxi Cosi Cabriofix & EasyFix (Belt)	●	●	●	●
Britax Römer King II LS (Belt)	●	●	●	●
Cybex Solution Z i-Fix (Belt)	●	●	●	●

● Install without problem  
 ● Install with care  
 ● Safety critical problem  
 ✗ Installation not allowed  
 — Not available

## Comments

In the both the frontal offset test and the side barrier test, protection of all critical body regions was good, for both child dummies. The front passenger airbag can be disabled to allow a rearward-facing child restraint to be used in that seating position. Clear information is provided to the driver regarding the status of the airbag and the system was rewarded. All of the child restraint types for which the iX is designed could be properly installed and accommodated in the car.



VULNERABLE ROAD USERS

Total 39.9 Pts / 73%



GOOD



ADEQUATE



MARGINAL



WEAK



POOR

Pedestrian

24.2 / 36 Pts



Head Impact	18.2 Pts
Pelvis Impact	0.0 Pts
Leg Impact	6.0 Pts

Vulnerable Road Users

15.6 / 18 Pts

System Name	Person Warning with City Braking Function
Type	Auto-Brake with Forward Collision Warning
Operational From	5 km/h



## VULNERABLE ROAD USERS

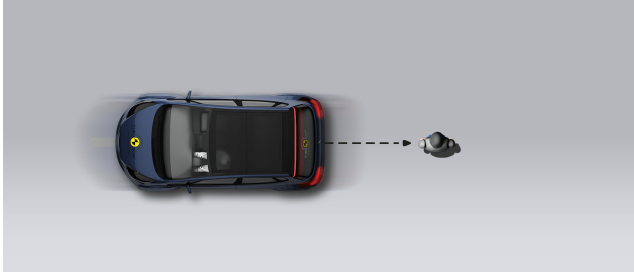
Total 39.9 Pts / 73%

## AEB Pedestrian

6.9 / 9 Pts

## ■ Day time

Vehicle reversing into standing pedestrian



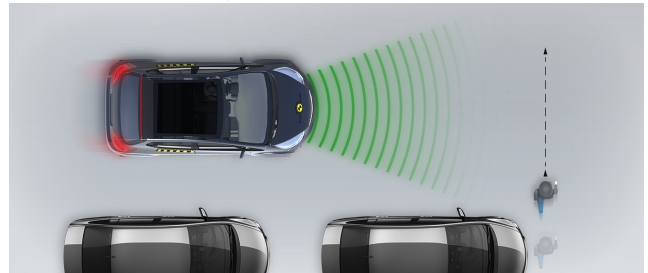
Pedestrian crossing a road into which a car is turning



Adult crossing the road



Child running from behind parked vehicles



Adult along the roadside

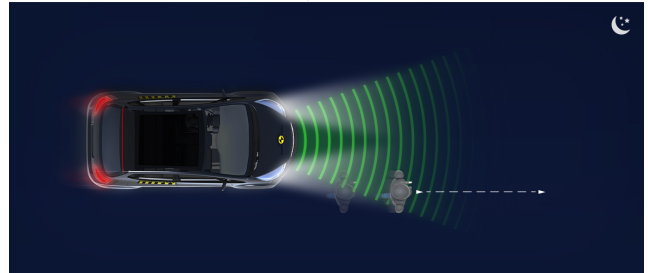


## ■ Night time

Adult crossing the road



Adult along the roadside





## VULNERABLE ROAD USERS

Total 39.9 Pts / 73%

## AEB Cyclist

8.7 / 9 Pts

Cyclist from nearside, obstructed view



Cyclist crossing



Cyclist along the roadside



## Comments

The iX has an 'active bonnet'. Sensors in the bumper detect when a pedestrian has been hit and actuators lift the bonnet to create more space between its surface and the hard components beneath. BMW demonstrated that the system worked robustly for various pedestrian statures and over a wide range of speeds and, accordingly, the car was tested with the bonnet in the deployed, raised, condition. Protection of the head of a struck pedestrian was good, or at least adequate, over almost the entire area tested by Euro NCAP. Similarly, the bumper provided good protection to pedestrians' legs at all test points. However, pelvis protection was poor over the width of the vehicle. The autonomous emergency braking system of the iX can detect vulnerable road users such as pedestrians and cyclists, as well as other vehicles. The system performed well in tests of its response to such road-users, with collisions avoided in most cases.



## SAFETY ASSIST

Total 13 Pts / 81%

 GOOD


 ADEQUATE

 MARGINAL

 WEAK


 POOR

## Speed Assistance


 2.8 / 3 Pts








System Name	Speed Assistance System
Speed Limit Information Function	Camera & Map, subsigns supported
Speed Limitation Function	System advised (accurate to 5km/h)




## Occupant Status Monitoring

 2.0 / 3 Pts


## &gt; Seatbelt Reminder

 1.0 / 2 Pts

Applies To	Front and rear seats		
Warning	Driver Seat	Front Passenger(s)	Rear Passenger(s)
Visual			
Audible			
Occupant Detection	—		—

 Pass
  Fail
  Not available

## &gt; Driver Monitoring

 1.0 / 1 Pts

System Name	Attentiveness Assistant
Type	Steering input and driver controls
Operational From	70 km/h



SAFETY ASSIST

Total 13 Pts / 81%

Lane Support

2.5 / 4 Pts

System Name	Lane Departure Warning with Steering Intervention		
Type	LKA and ELK		
Operational From	60 km/h		
PERFORMANCE			
Emergency Lane Keeping	<div></div>	ADEQUATE	
Lane Keep Assist	<div></div>	GOOD	
Human Machine Interface	<div></div>	GOOD	

AEB Car-to-Car

5.8 / 6 Pts

System Name	Collision Warning with Braking Function	
Type	Autonomous emergency braking and forward collision warning	
Operational From	5 km/h	
Sensor Used	camera	

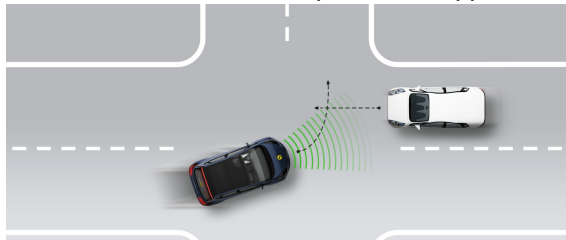


## SAFETY ASSIST

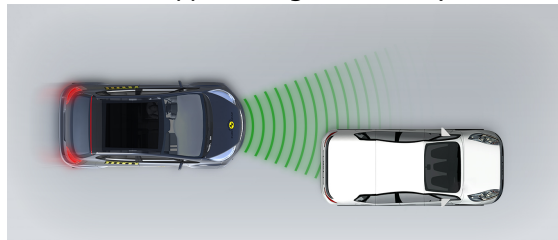
Total 13 Pts / 81%

## ■ Autobrake function only

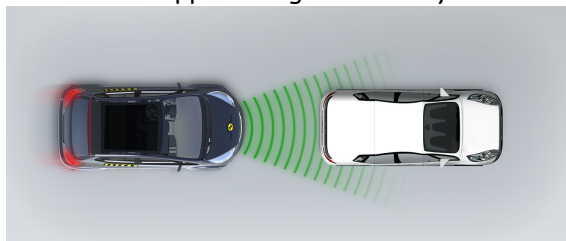
Test car turns across the path of an approaching car



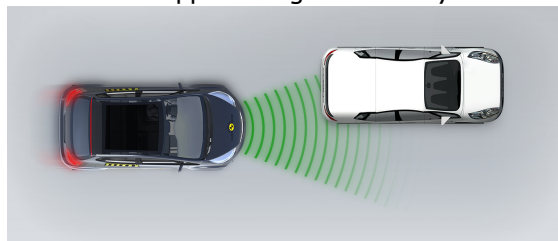
Approaching a stationary car



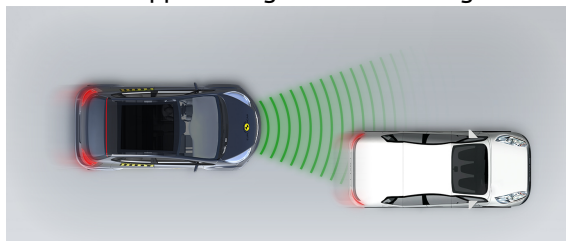
Approaching a stationary car



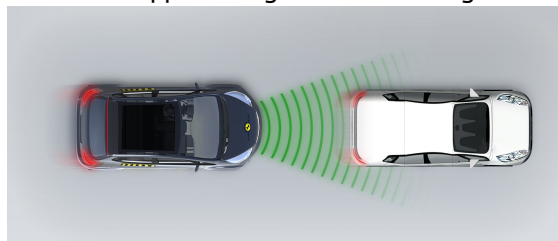
Approaching a stationary car



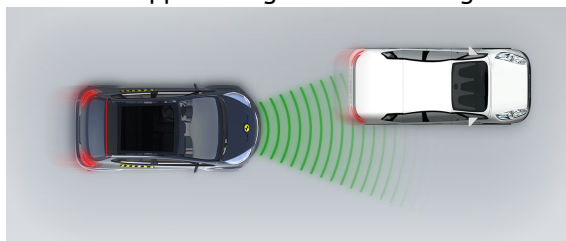
Approaching a slower moving car



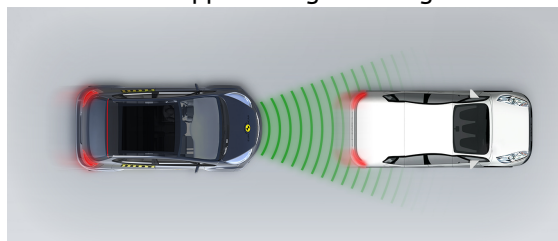
Approaching a slower moving car



Approaching a slower moving car



Approaching a braking car



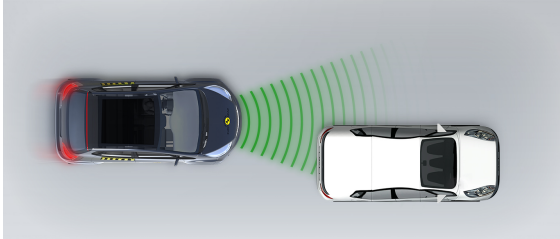


## SAFETY ASSIST

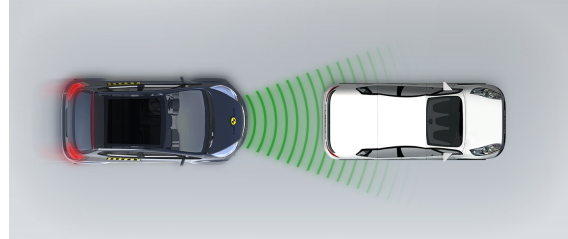
Total 13 Pts / 81%

## ■ Driver reacts to warning

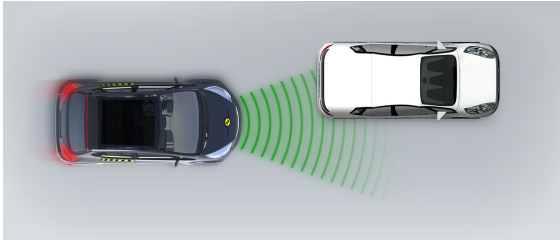
Approaching a stationary car



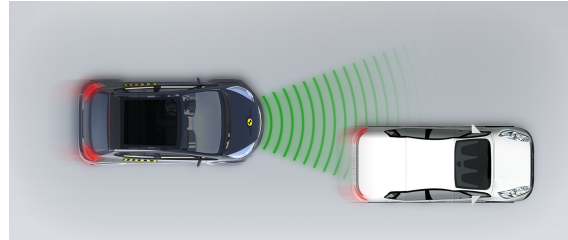
Approaching a stationary car



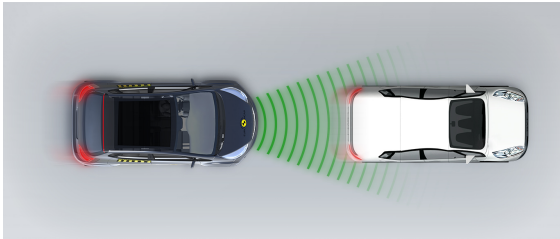
Approaching a stationary car



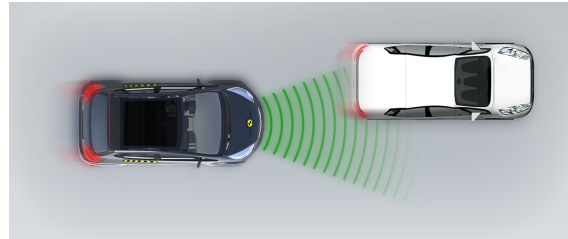
Approaching a slower moving car



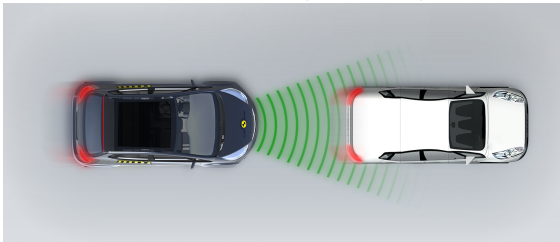
Approaching a slower moving car



Approaching a slower moving car



Approaching a braking car







## SAFETY ASSIST

Total 13 Pts / 81%

## Comments

The iX has a seatbelt reminder system for the front and rear seats. 'Attentiveness Assistant' monitors steering inputs and driver controls to detect behaviour characteristic of fatigued driving, and advises the driver to rest when necessary. The lane support system gently corrects the vehicle's path when it is drifting out of lane and also intervenes in some more critical situations to stop the car from leaving the road, for example. A speed assistance system uses a camera and digital mapping to determine the local speed limit and provides the information to the driver, allowing the speed limiter to be set appropriately. The AEB system performed well in tests of its reaction to other cars.

## RATING VALIDITY

### Variants of Model Range

Body Type	Engine	Model Name/Code	Drivetrain	Rating Applies	
				LHD	RHD
5 door SUV	electric	iX xDrive40*	4 x 4	✓	✓
5 door SUV	electric	iX xDrive50	4 x 4	✓	✓
5 door SUV	electric	iX M60	4 x 4	✓	✓

\* Tested variant

### Annual Reviews and Facelifts

Date	Event	Outcome	
December 2021	Rating Published	2021 ★ ★ ★ ★ ★	✓